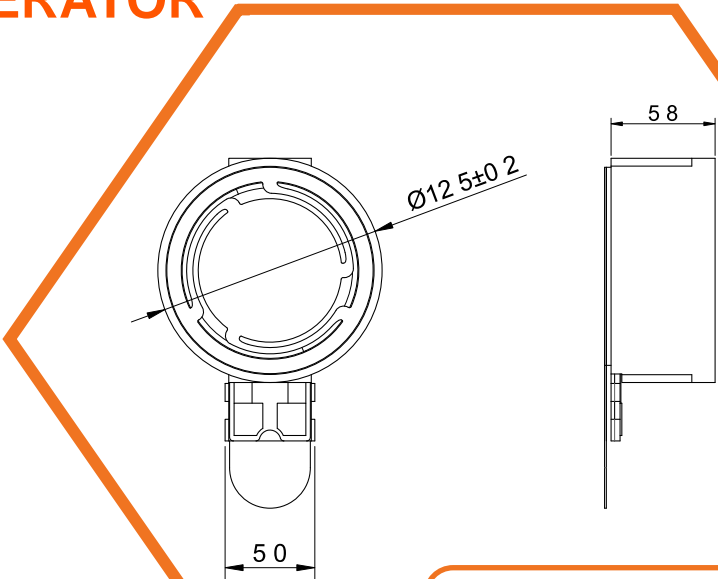


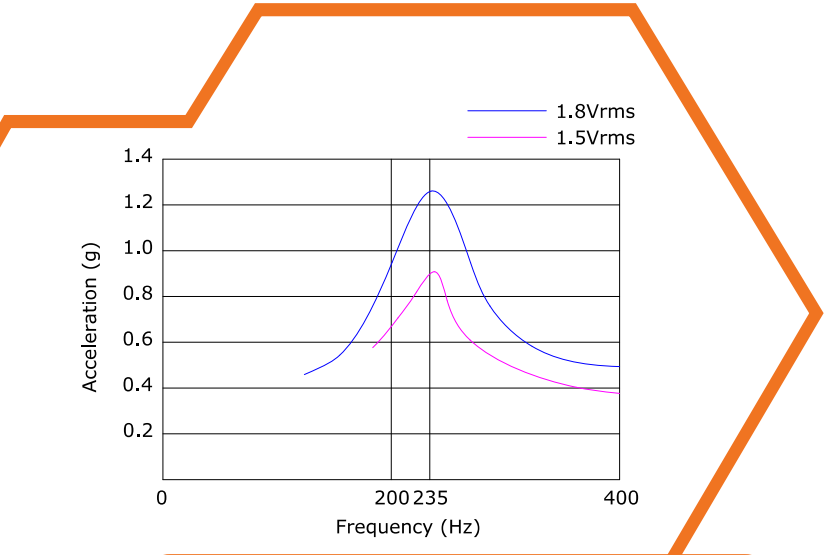
# SoniCrest

## SPEAKER SOUND GENERATOR

**SXT12A**



**Dimensions**  
Unit : mm  
Tolerance : ±0.3mm



**Acceleration Characteristics**  
Input Signal: 1.5Vrms, 235Hz

Specification (all data taken at 25°C unless otherwise specified)

Part Number	Coil Impedance (Ω)	Rated Voltage (Vrms)	Resonance Frequency (Hz)	Acceleration (Grms)	*Rise Time (ms)	*Break Time (ms)	Operating Temperature (°C)	Storage Temperature (°C)
SXT12A-24	24 ± 20%	1.5	235 ± 20%	≤ 0.9	≤ 60	≤ 90	-40 to +85	-40 to +95

The specification are only for 24Ω version. Specification for other impedance is available upon request.

\*Value normalized to 1.5Vrms, 235Hz at 100g load in middle